

STRIPED FABRICS COLLECTION

From Radiant Blinds & Awnings

CHOOSE FROM

96 AWNING FABRICS

radiant 
 blinds
& awnings

STRIPED FABRICS COLLECTION

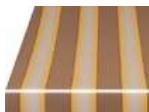
From Radiant Blinds & Awnings

FABRIC UNIQUE FEATURES:

- 100% outdoor solution dyed acrylic fabric
- UV rays protection shield
- Water repellent
- Stain resistant
- Mildew resistant
- Fade resistant



120 cm



Asia 3015 29 cm UV 60



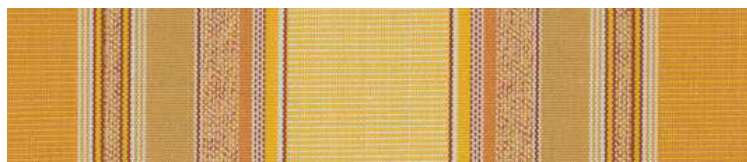
San Francisco 2806 30 cm UV 60



Nebraska 2561 29 cm UV 60



Arizona 2005 30 cm UV 60

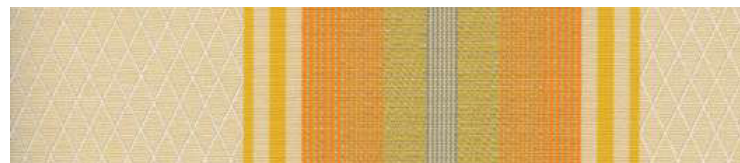


Tauro 2573 24 cm UV 60



Nectar 2820 30 cm UV 60

120 cm



Vesubio 2636 23 cm UV 60



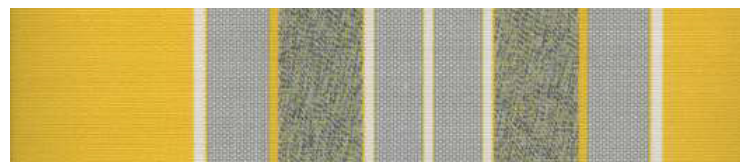
Teide 2228 24 cm UV 60



Tajo 2230 30 cm UV 60



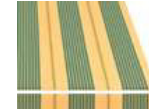
York 2930 24 cm UV 60



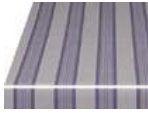
Sol 2126 24 cm UV 60



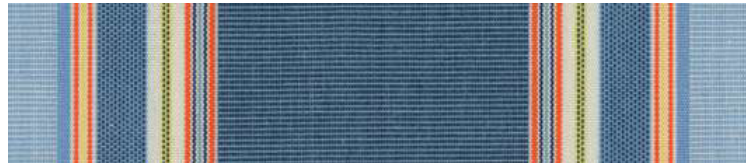
Mexico 2151 24 cm UV 60



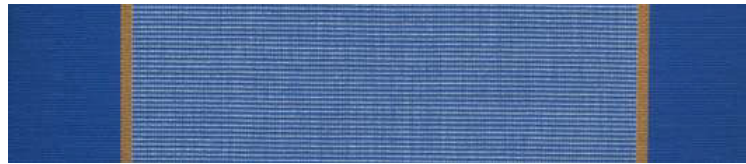
120 cm



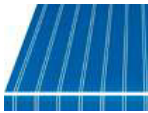
Galaxy 3020
iii 24 cm ☀ UV 60



Tahiti 2565
iii 24 cm ☀ UV 60



Alaska 2023
iii 30 cm ☀ UV 80



Viena 2251
iii 10 cm ☀ UV 80



Helsinki 2817
iii 13 cm ☀ UV 80

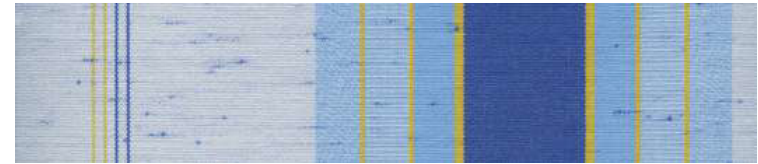


Balmoral 2921
iii 24 cm ☀ UV 60

120 cm



Miami 2702
iii 30 cm ☀ UV 60



Praga 2205
iii 24 cm ☀ UV 60



Veleta 2676
iii 24 cm ☀ UV 60



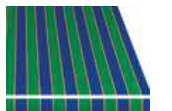
Piscis 2574
iii 24 cm ☀ UV 80



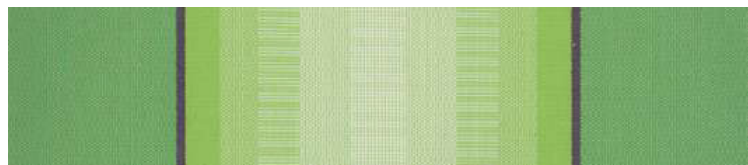
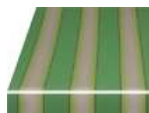
Venus 2659
iii 24 cm ☀ UV 60



Capri 2063
iii 11 cm ☀ UV 80



120 cm



Europa 3016
29 cm UV 60



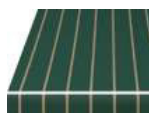
Africa 3012
29 cm UV 80



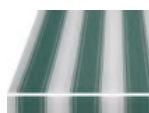
Alabama 2562
29 cm UV 60



Aries 2576
24 cm UV 80

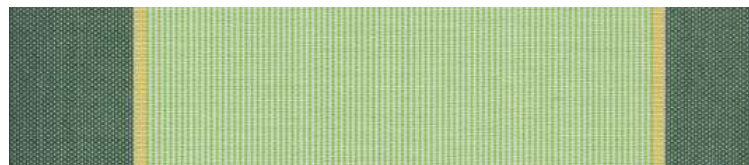


Estocolmo 2816
13 cm UV 80



Stuttgart 2571
30 cm UV 60

120 cm



Orlando 2191
30 cm UV 60



Curaçao 2564
24 cm UV 60



Parma 2207
24 cm UV 60



Pluton 2179
24 cm UV 60



Windsor 2929
24 cm UV 60



Canada 2061
30 cm UV 80



120 cm



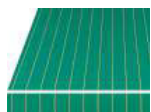
Samoa 2567 24 cm UV 80



Itaca 2581 24 cm UV 80



Aneto 2012 24 cm UV 80



Tamesis 2231 8 cm UV 80

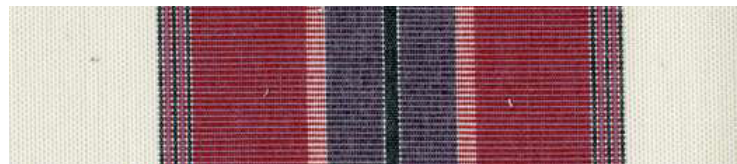


Acuario 2807 29 cm UV 60

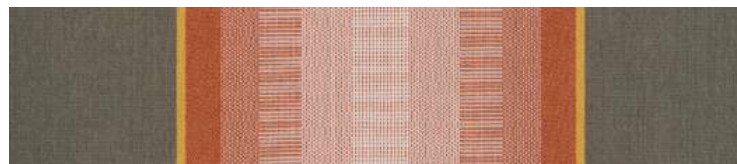


Carnaval 2960 20 cm UV 60

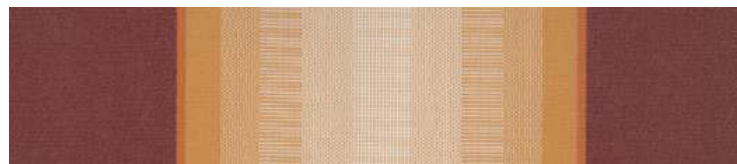
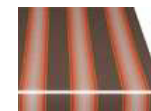
120 cm



Tijuana 1483 23 cm UV 60



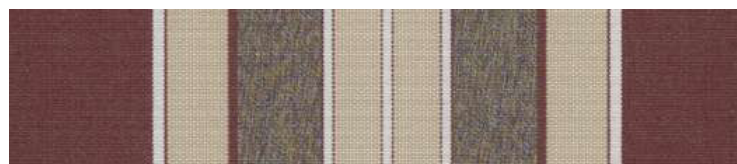
America 3013 30 cm UV 80



Oceania 3017 30 cm UV 80



Cosmos 3019 23 cm UV 60



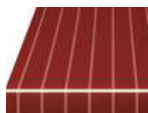
Marte 2121 24 cm UV 80



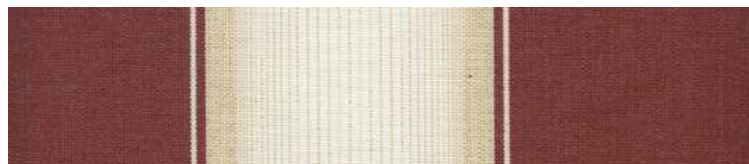
Alsacia 2031 30 cm UV 80



120 cm



Oslo
2818 13 cm UV 80



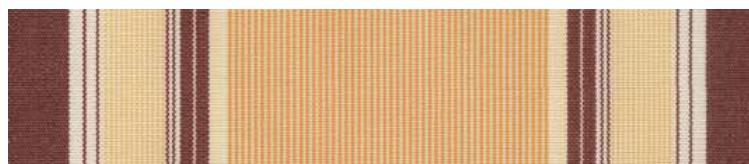
Patum
2962 17 cm UV 60



Sienna
2223 24 cm UV 60



Moncayo
2168 24 cm UV 60



Geminis
2808 29 cm UV 60

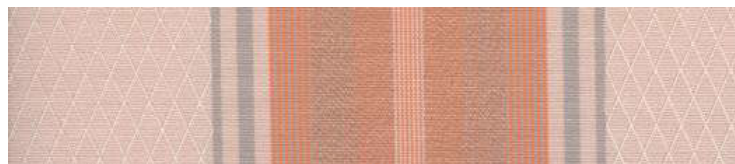
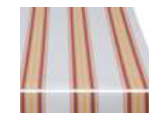


Georgia
2563 30 cm UV 80

120 cm



Rio
2966 30 cm UV 60



Everest
2125 24 cm UV 40



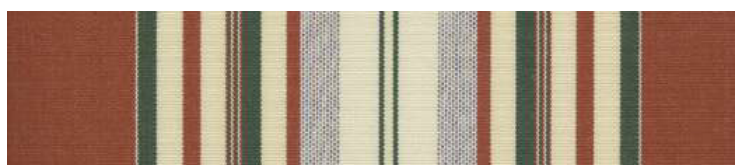
Topacio
2233 30 cm UV 60



Leo
2575 24 cm UV 60



Hawaii
2566 24 cm UV 60



Jamaica
2701 30 cm UV 60



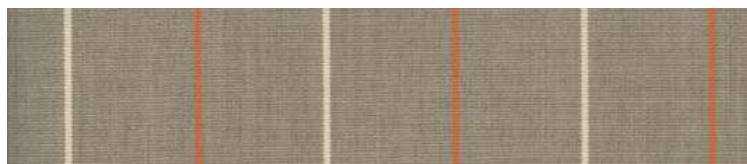
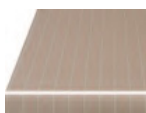
120 cm



Trekking 3027 23 cm UV 60



Washington 2805 30 cm UV 60



Londres 2822 7 cm UV 60



Manchester 2823 24 cm UV 60

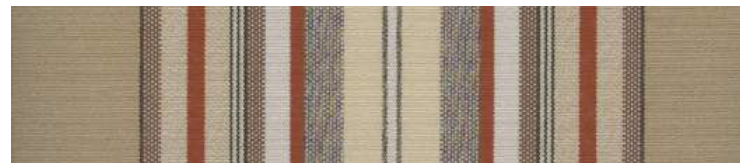


Libra 2809 29 cm UV 60

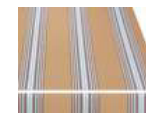


Texas 2238 30 cm UV 60

120 cm



Puerto Rico 2704 30 cm UV 60



Pirineos 2790 15 cm UV 60



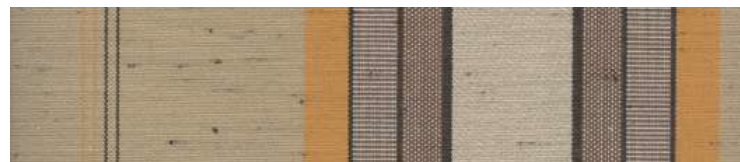
Dakar 2080 39 cm UV 40



Kansas 2925 30 cm UV 60



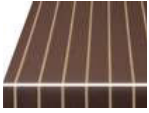
St. Andrews 2924 24 cm UV 60



Sahara 2220 24 cm UV 60



120 cm



Copenhagen 2815 13 cm UV 60



Tierra 2128 24cm UV 80



Madeira 2568 24 cm UV 60



Peru 2201 30 cm UV 60



Napoli 2175 17 cm UV 40

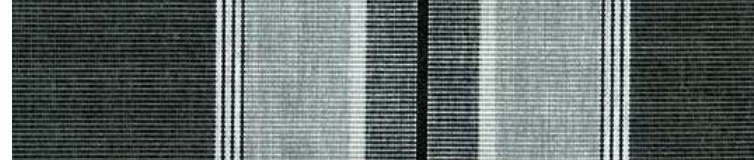


Anapurna 24 cm UV 60

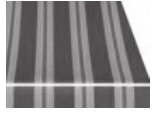
120 cm



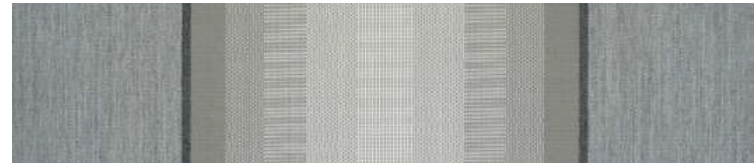
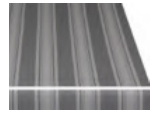
Sonora 1486 24 cm UV 60



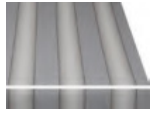
Jalisco 1484 23 cm UV 80



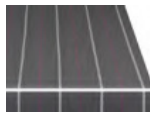
Luna 3021 23 cm UV 80



Antartida 3014 29 cm UV 60



Derby 2008 24 cm UV 80



New York 30 cm UV 60



120 cm



Colonia
2964 iii 30 cm ☀ UV 60



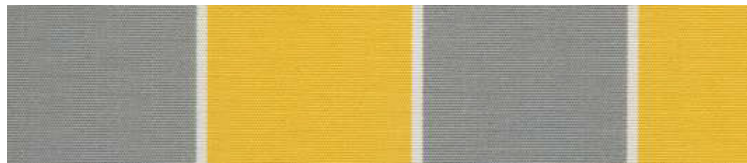
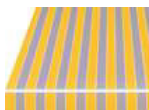
Paris
2200 iii 4 cm ☀ UV 40



Argentina
2016 iii 30 cm ☀ UV 60



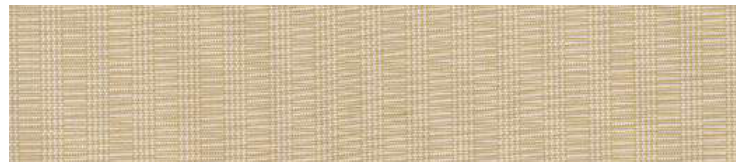
Nevada
2176 iii 30 cm ☀ UV 60



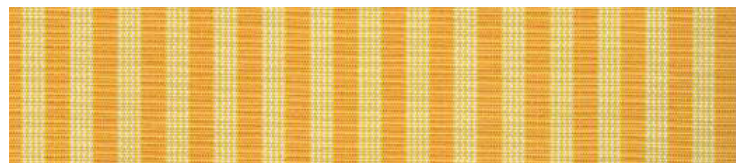
Monaco
2154 iii 11 cm ☀ UV 60



Urban iii 29 cm ☀ UV 80



Praline
3010



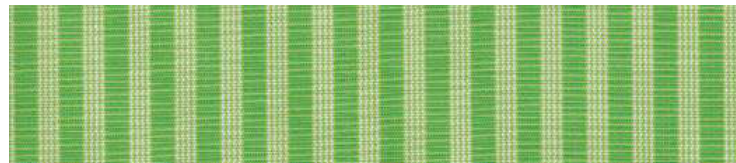
Mango
3008



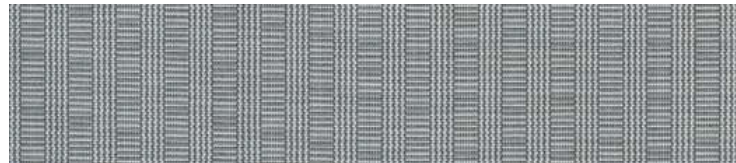
Fresa
3005



Ice
3006

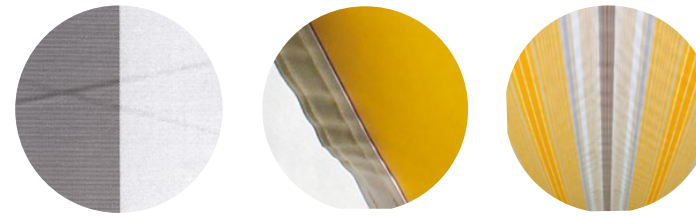


Kiwi
3007



Nube

AWNING FABRIC CHARACTERISTICS



Awning covers are made up of technical fibres which serve a technical function, as well as a decorative purpose. The fabric is woven from solution dyed acrylic fibres which gives high resistance of the colours to UV and the fabric has a built in treatment for high water repellency.

Although first class fabric is used in production, there are limits to the degree of perfection that can be achieved. Small irregularities such as knots, thicker and thinner sections of yarn, isolated yarn breaking, as well as certain idiosyncrasies of awning covers that awning owners complain about occasionally but such characteristics cannot be completely eradicated even with today's advanced technologies.

Despite this, blemishes like creases, rippling seam and the hem area, over-stretching in the area and honeycombing cannot be ruled out. This has no negative impact on the quality and operating life. All these unavoidable effects are excluded as reason for rejection.

CREASES

Can appear during the cover making process and when the fabric is folded. A dark line may become visible at the crease when viewed against the light, especially with light colours. This is because the fibres are bent when the fabric is folded, which changes the light transmitting qualities of the material.

PUCKERING

Puckering around the seam and in the main panel can appear along the side hems, around the seams and in the centre of the panel. There is a double layer of fabric at the seams which are sewn or bonded when flat. As the cover is wound onto a roller the two layers of fabric are forced to assume two different diameters, thus creating tension within the fabric.

The tension of the folding arms and the weight of the roller and/or the front profile can contribute to this effect. Puckering can also develop if a water trough forms during heavy rainfall.

RESISTANCE TO RAIN

Solar protection fabrics are impregnated with a water repellent finish and, if properly cared for and used at a pitch of at least 14 degrees, remain impervious to water during short, light rainfall. During prolonged and/or heavy rainfall, the awning must not be extended or should be retracted to prevent damage.

If the cover gets wet, the awning must be extended again, as soon as possible, in order to let it dry to prevent marking of the fabric. Awnings are not designed to be used in sleet, snow and heavy downpours of rain.

STRETCHING OF SIDE HEMS

In most cases an active tensioning system keeps the fabric almost permanently taut. Although seams and hems provide reinforcement, they also have to withstand the most strain. When the cover is rolled up, the seams and hems lie on top of each other which increases the pressure and tension even more. This results in increased strain and elongation. As a consequence the side hems may sag slightly when the awning is extended.

TAKING CARE OF YOUR AWNING COVER

Dust and dirt are best removed when the cover is dry by using a soft brush. Remove leaves, twigs and other debris immediately. Do not roll the awning fabric with debris in it as this could damage or tear the fabric.

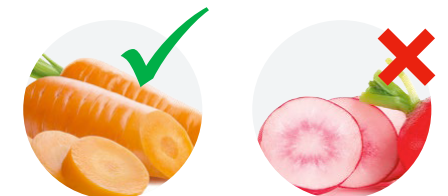
Small marks or stains should be removed using lukewarm water and a standard, preferably liquid detergent suitable for delicate fabrics (5 per cent soap solution: water temperature max. 30 degrees).

Rinse the cleaned area thoroughly with water and treat with a commercial fabric waterproof spray solution. Please be aware that this measure will not restore the cover to its original state.


COLOUR FASTNESS AND QUALITY


The manufacturing process determines whether a fabric keeps its brilliant colour for many years to come. The fabrics are solution dyed. This means that the colour pigment is stored in the fibres during the spinning process. They are then spun into a yarn. The finished yarn is therefore fully saturated with dye (carrot). Acrylic fabrics have been on the market for decades and are the best possible proof that colours can remain brilliant for a very long time.


The traditional method is to spin the yarn first and then dye it. We call this yarn/piece dyeing (radishes). With this process, bleaching of the colour cannot be ruled out.




CONTACT US

 0208 390 8755

 www.radiantblinds.co.uk

 info@radiantblinds.co.uk

 Head Office: 101 Ewell Road,
Surbiton, Surrey, KT6 6AH

radiant 
 **blinds**
&awnings